



Holland America Line®
SAVOR THE JOURNEY



THIS IS ROTTERDAM

ARRIVING 2021





THE NEW SOUND OF CRUISING

OUR NEWEST SHIP FILLS YOUR JOURNEY WITH A RHYTHM ALL ITS OWN.

THIS IS A SHIP BUILT TO MOVE YOU

Holland America Line’s newest ship, *Rotterdam*, delivers the best of everything we do. It starts with a celebration of the best in live music at Music Walk®, an exclusive collection of music experiences featuring world-class performances every night. Throughout the ship, you will find all your favorite elements of cruising with Holland America Line: exquisite cuisine guided by some of the world’s leading chefs; gracious, award-winning service; superbly appointed staterooms and suites; and a mastery of the details that reflects our nearly 150-year history – and that keeps our guests returning again and again.

2,668 GUESTS	1,048 CREW	13 GUEST DECKS	13 RESTAURANTS AND CAFÉS	984 FEET LONG	99,800 GROSS TONS	7 ENTERTAINMENT VENUES	12 BARS	3 MEETING ROOMS
-----------------	---------------	-------------------	-----------------------------	---------------	-------------------	---------------------------	---------	--------------------



2 SWIMMING POOLS	SPA & SALON	FITNESS CENTER	SUITE LOUNGE	WRAPAROUND PROMENADE DECK	PRIVATE DINING EXPERIENCE	DUTY-FREE SHOPS	ONBOARD WI-FI ACCESS	CASINO	SPORT COURT
---------------------	----------------	-------------------	-----------------	------------------------------	------------------------------	--------------------	-------------------------	--------	----------------

THIS IS A DAZZLING DEBUT

DISCOVER THE TRUE CARIBBEAN DURING
ROTTERDAM'S PREMIERE SEASON.





Rotterdam debuts October 20, 2021, with an incredible 14-day journey across the Atlantic from Amsterdam to Ft. Lauderdale. From there, she'll sail a variety of Caribbean itineraries that highlight the region's perennial favorites and seldom-seen gems. Every voyage includes a day on our award-winning private island, Half Moon Cay, along with idyllic destinations such as Aruba, Barbados and St. Lucia. Below is a selection of featured itineraries from *Rotterdam*'s premiere season.



14-DAY ATLANTIC SOJOURN

Oct 20, 2021

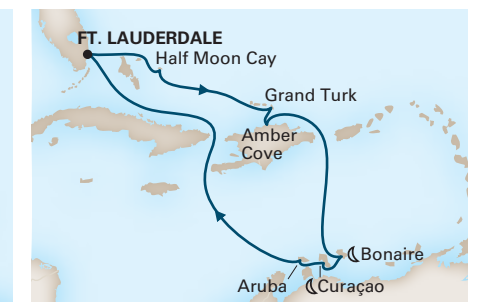
Amsterdam to Ft. Lauderdale



11-DAY SOUTHERN CARIBBEAN WAYFARER®

Nov 10; Dec 1, 22, 2021

Roundtrip Ft. Lauderdale



10-DAY SOUTHERN CARIBBEAN SEAFARER®

Nov 21; Dec 12, 2021

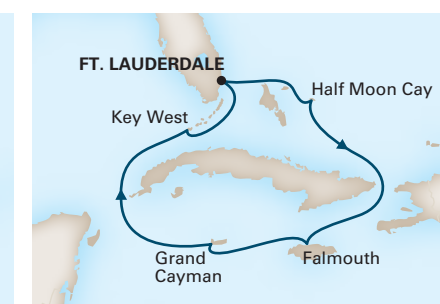
Roundtrip Ft. Lauderdale



7-DAY EASTERN CARIBBEAN

Jan 2; Feb 27; Apr 3, 2022

Roundtrip Ft. Lauderdale



7-DAY WESTERN CARIBBEAN

Jan 9; Mar 6, 27*, 2022

Roundtrip Ft. Lauderdale

♦ This itinerary varies; see hollandamerica.com for details.



7-DAY SOUTHERN CARIBBEAN

Jan 16*; Feb 20; Mar 20, 2022

Roundtrip Ft. Lauderdale

♦ This itinerary varies; see hollandamerica.com for details.

See our 2021-2022 Caribbean Planner or hollandamerica.com for the rest of *Rotterdam*'s inaugural season in the Caribbean.

🕒 **Evening Stay.** Departure between 10:00pm and Midnight.

For the most up-to-date details and fares see hollandamerica.com.

THIS IS A SHIP MADE FOR LIVE MUSIC

WITH THE BEST MUSIC AT SEA, *ROTTERDAM* CREATES THE
SOUNDTRACK TO THE DISCOVERIES YOU MAKE EVERY DAY.





THIS IS A REVOLUTION IN SOUND

On other cruise lines, music is merely background noise. Not here. It's front and center on board *Rotterdam*, filling every night with the sounds of celebration and turning everyday moments into unforgettable memories. At the heart of it all is Music Walk®: an exclusive collection of live music experiences featuring electrifying performances from accomplished artists. From the soulful sounds of Memphis R&B to rock's biggest anthems, you'll find something you love, night after perfect night. Plus, enjoy music, film, dance and more in the World Stage, where innovation meets entertainment.





Lincoln Center
Stage

LINCOLN CENTER STAGE

Lincoln Center Stage showcases outstanding programs of chamber music, from classical to contemporary.



B.B. KING'S BLUES CLUB

Direct from Beale Street, B.B. King's All-Star Band brings the best of Memphis R&B to sea.



BILLBOARD ONBOARD

Our pianists rock the house with the hits you know and love. It's off the charts. Literally.



ROLLING STONE ROCK ROOM

Step into the pages of *Rolling Stone* magazine as a live band chronicles rock history.



**WORLD
STAGE**

WORLD STAGE

Stunning visuals and groundbreaking entertainment come together at World Stage, as a 270-degree LED screen creates the backdrop for awe-inspiring performances.

THIS IS THE NEW TASTE OF PERFECTION

OUR WORLD-RENOWNED CULINARY COUNCIL® AND
DISTINGUISHED WINE AND SPIRITS EXPERTS BRING UNSURPASSED
SKILL AND PASSION TO EVERY DINING VENUE, LOUNGE AND BAR
ON BOARD *ROTTERDAM*.





A WORLD OF TASTE

The Dining Room

THE DINING ROOM

Our flagship dining experience, The Dining Room is a welcoming and sophisticated setting for an exquisite breakfast, leisurely lunch or superb multicourse dinner.

PINNACLE GRILL

Pinnacle Grill is the ultimate steakhouse at sea and our premier onboard restaurant, where impeccable steak, seafood and wine make for one of the finest meals you'll ever have.

RUDI'S SEL DE MER

Master Chef Rudi Sodamin's award-winning, lively brasserie offers a modern twist on classic French dishes and seafood.

CANALETTO

Canaletto is a relaxed setting with authentic Italian cuisine that is best enjoyed when shared.

TAMARIND

Explore the culinary traditions of Southeast Asia, China and Japan with cuisine praised by *Condé Nast Traveler* as rivaling the top restaurants on land. Features an al fresco dining area.

DE LIBRIJE♦

Don't miss out on an evening to remember as Pinnacle Grill transforms into De Librije, the three-Michelin-starred restaurant of Culinary Council® member Jonnie Boer.

NAMI SUSHI

Nami Sushi showcases the innovative and vibrant recipes of Master Sushi Chef Andy Matsuda. Located within the Tamarind restaurant, it offers tasty sushi and refreshing Asian beers, sake and cocktails.

CLUB ORANGE DINING ROOM

One of the Club Orange amenities (included for Neptune and Pinnacle Suite guests; available for purchase for all other guests) is our private dining venue for breakfast and dinner with an expanded menu.

♦ On select Europe itineraries.



RAISING THE BAR

Only Holland America Line pairs exceptional cuisine with a unique menu of craft cocktails, created by a Master Mixologist, and a vast selection of distinctive wines hand-selected by our internationally acclaimed Wine Curator.





CASUAL, YET REFINED

LIDO MARKET

A casual, modern marketplace, Lido Market offers the widest range of food options on board for breakfast, lunch, dinner and a late-night snack.

DIVE-IN

This casual poolside grill serves up the best burgers at sea, Nathan's Famous hot dogs, grilled chicken breast sandwiches, golden french fries, a veggie-friendly portabella mushroom stack and the popular Beyond Burger®.

NEW YORK DELI & PIZZA

Inspired by New York favorites, choose from authentic thin-crust personal pizzas, fresh salads, and made-to-order deli sandwiches.

EXPLORATIONS CAFÉ

Our relaxing high-seas coffeehouse is your home for handcrafted espresso drinks during the day, refreshing cocktails in the evening and panoramic views.

GRAND DUTCH CAFE

Enjoy a savory snack, a pint of lager or a traditional Dutch coffee in a space that exudes Dutch heritage from the moment you walk in.

GELATO

With a wide variety of flavors to choose from and ingredients like Sicilian pistachios and amarena cherries, each frozen spoonful transports you to Italy.

TEA TIME

Sample a variety of piping-hot teas and, once per cruise, enjoy Afternoon High Tea in The Dining Room with traditional fare and white-glove service.

24-HOUR IN-ROOM DINING

Enjoy breakfast in bed or an early dinner on your verandah – entrées and more are available whenever you wish.



Grand Dutch Cafe



Half Moon Bar



THIS IS THE NEW WAY TO CREATE YOUR PERFECT DAY

ENGAGING, INSPIRING OR SIMPLY RELAXING,
ACTIVITIES ABOUND ON BOARD *ROTTERDAM*.

Thermal Spa



EXPLORATIONS CENTRAL®

Holland America Line's exclusive Explorations Central offers local insights, activities and cultural encounters that will make your journey more engaging. The discovery center, located in the Crow's Nest, is your gateway to onboard programs and shore excursions, featuring interactive travel resources, real-time data from the ship's bridge and more.

EXC® TALKS

Hosted by *Rotterdam's* Cruise and Travel Director, and featuring contributions from experts, artists and performers, these unique multimedia presentations feature authentic stories that immerse you in local culture and history before you even step on shore.

PORT TO TABLE

Explore regional culinary traditions through onboard cooking demonstrations, and food and wine tastings.

THE GREENHOUSE® SPA & SALON

The Greenhouse Spa & Salon nurtures every aspect of well-being with a signature brand of spa rituals and healing treatments for men and women.

FAMILY-FOCUSED EXPERIENCES

Rotterdam offers supervised, age-appropriate games and activities for kids and special events for teens as well as cooking classes, game nights and more for the whole family.

FITNESS CENTER

The professionally staffed Fitness Center offers classes in indoor cycling, Pilates and more, as well as the option to work out at your own pace using the latest cardio and weight machines.

SHORE EXCURSIONS

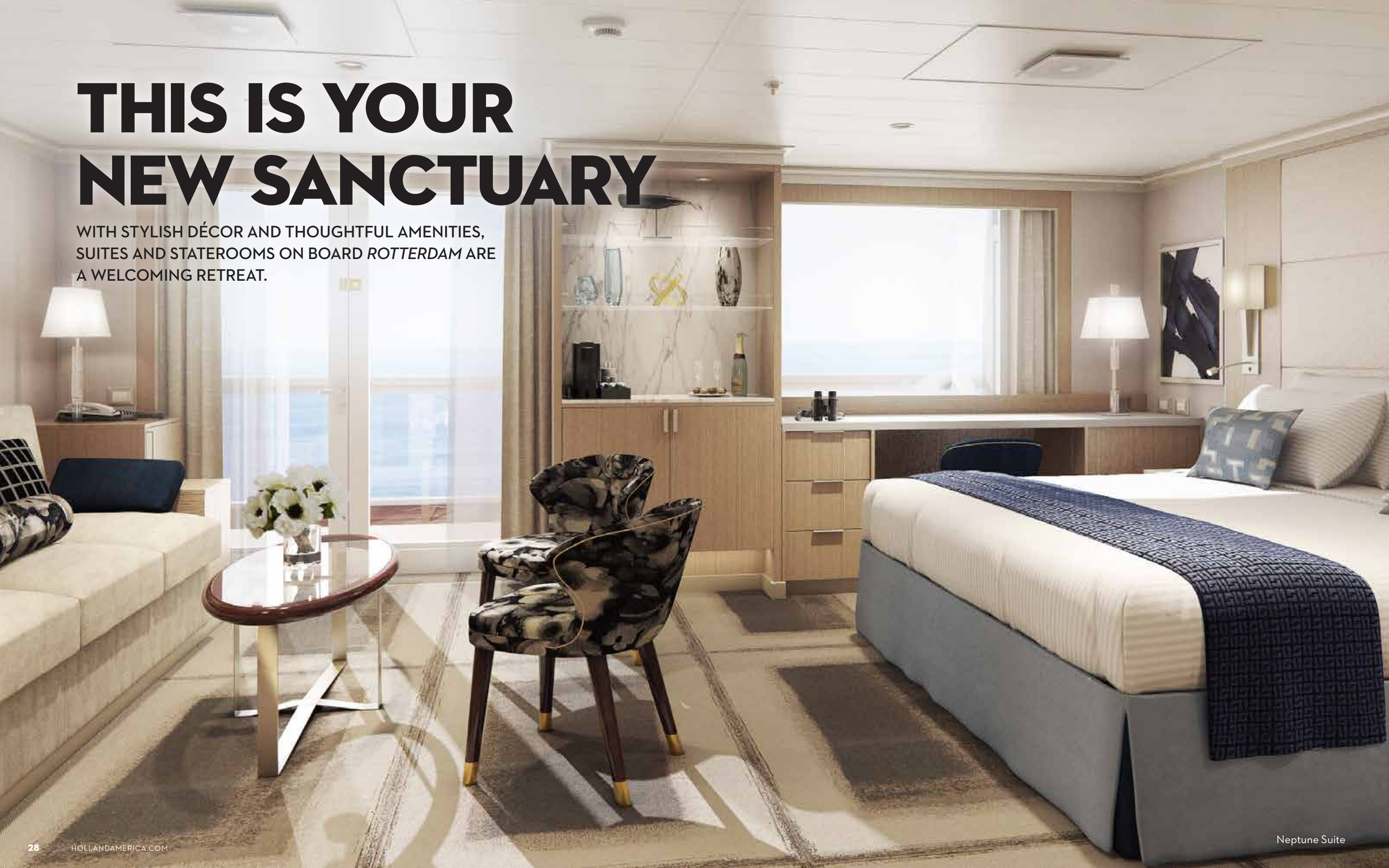
Our shore excursions help you connect with the people and places you visit. We have a carefully curated selection of excursions to suit every interest and activity level, including culinary shore excursions in partnership with *FOOD & WINE®* magazine.



Ocean Bar

THIS IS YOUR NEW SANCTUARY

WITH STYLISH DÉCOR AND THOUGHTFUL AMENITIES,
SUITES AND STATEROOMS ON BOARD *ROTTERDAM* ARE
A WELCOMING RETREAT.





Staterooms and suites on board *Rotterdam* are the perfect place to relish today's discoveries while preparing for tomorrow's.

STATEROOM AMENITIES:

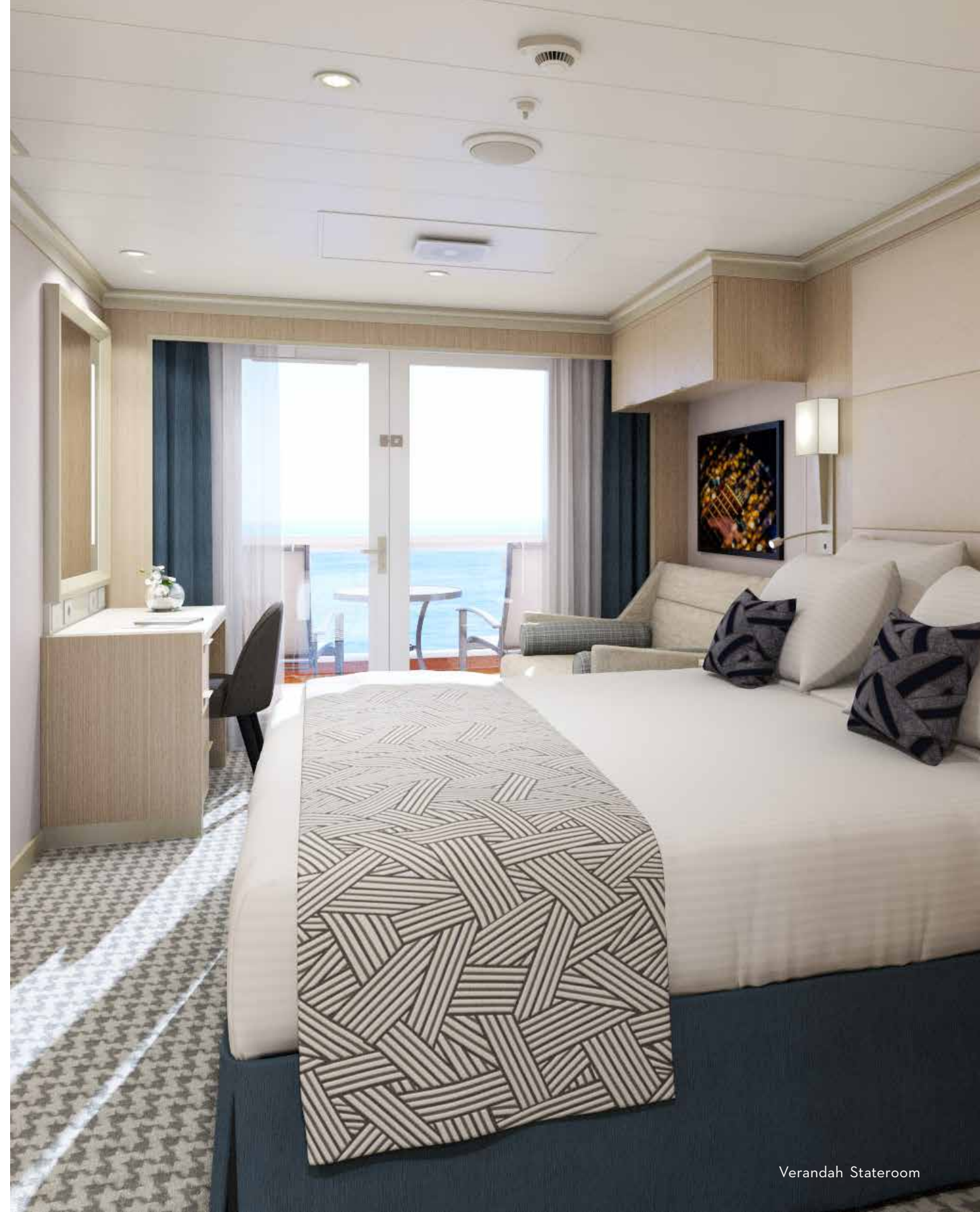
- **SLUMBER** on your signature Mariner's Dream® bed, made up with finely woven cotton linens.
- **REJUVENATE** as you dine alfresco or sunbathe on your private verandah.
- **PAMPER** yourself with fragrant soaps, lotions and shampoos from Elemis Revitalise-Me; 100 percent Egyptian cotton towels; and luxurious bathrobes.
- **ENJOY** a wide selection of on-demand movies and television shows.
- **DINE** at your leisure with complimentary In-Room Dining 24 hours a day and fresh fruit replenished daily at your request.

FAMILY STATEROOMS

Family Ocean-view Staterooms make traveling together more convenient and pleasurable, with accommodations for up to five guests, extra closet space and two bathrooms — one with a bathtub, shower, sink and toilet and one with a shower and sink.

SINGLE STATEROOMS

Solo travelers are beautifully accommodated thanks to elegant staterooms tailored just for one.





Pinnacle Suite



Neptune Lounge



Signature Suite

STEP UP TO A SUITE

UPGRADE TO A SUITE AND TREAT YOURSELF TO A HOST OF LUXURIOUS EXTRAS, INCLUDING A PRIVATE, ROOMY VERANDAH AND LIGHT-FILLED INTERIORS.

VISTA AND SIGNATURE SUITES

With expansive verandahs, large sitting areas and floor-to-ceiling glass doors, these spacious suites offer more room to spread out and entertain. Additional extras such as fresh flowers and binoculars for use during the voyage make the journey even more enjoyable.

PINNACLE AND NEPTUNE SUITES

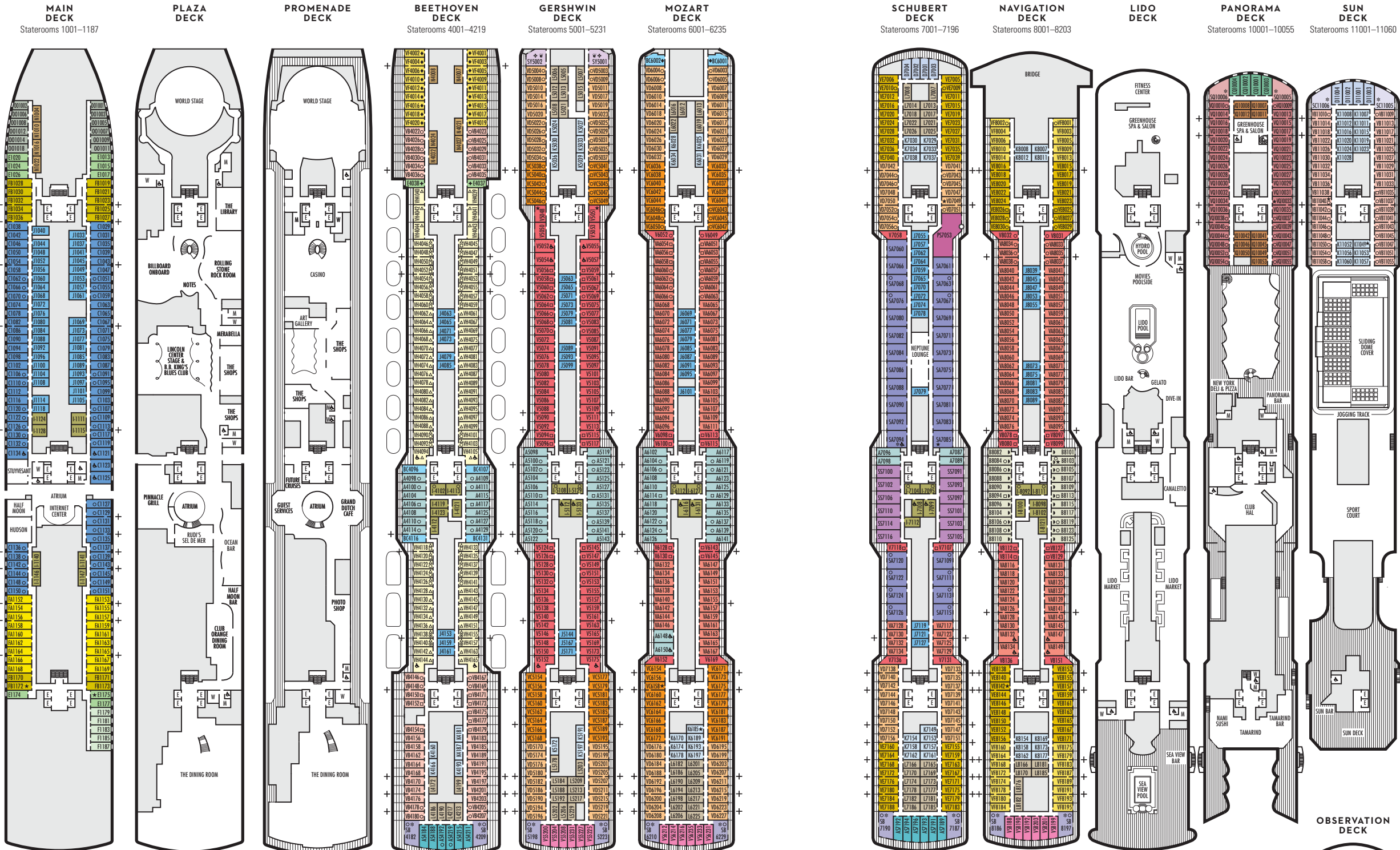
Our largest and most luxurious suites feature king-size beds, Bose® Soundlink® Mini Bluetooth® audio systems, complimentary laundry and dry-cleaning, and in-suite coffee/espresso machines. Pinnacle and Neptune suite guests also receive priority access throughout the ship, including use of the exclusive Neptune Lounge.

NEPTUNE LOUNGE

Pinnacle and Neptune suite guests have access to the Neptune Lounge, a private space to relax, socialize and enjoy continental breakfast in the morning, and cookies, sandwiches and other treats throughout the day. Pinnacle and Neptune suite guests can also call on the services of a personal concierge to help make spa reservations, book rental cars, secure dining reservations and more.

CLUB ORANGE

Pinnacle and Neptune Suite guests also receive Club Orange™ benefits, including priority check-in and disembarkation, added amenities and access to the dedicated Club Orange restaurant for breakfast and dinner. ([see page 21](#))



STATEROOM SYMBOL LEGEND

- Quad (2 lower beds, 1 sofa bed, 1 upper)
- ⊙ Triple (2 lower beds, 1 upper)
- Triple (2 lower beds, 1 sofa bed)
- ⊕ Double (2 lower beds convertible to 1 king-size bed, no Murphy bed)
- △ Partially obstructed view
- + Connecting rooms
- ◆ Floor-to-ceiling windows
- * Shower only
- ▶ Uncovered verandah
- ◆ Staterooms have solid steel verandah railings instead of clear-view Plexiglas® railings
- ♣ Suites have part solid steel, part clear-view Plexiglas® verandah railings

ACCESSIBILITY STATEROOM SYMBOL LEGEND

- ♿ Fully Accessible: Suites SA7094, A6150 & A6148, and staterooms VA8149, VA8147, VA8134, VA8132, I-7108, I-7099, I-6131, I-6116, V5175, V5152, I-5133, I-5112, V5057, V5055, V5054, V5052, VH4165, VH4144, VH4105, VH4094, C1134, C1125, C1123, C1121 have a roll-in shower only
- ★ Ambulatory Accessible: Suites B8103 & SA7085 and staterooms K11049, VB11040, VQ10033, VE8142, VD7049, K6185, VC6158, V5051, V5048, FB1172 & E1175 have a shower only with small step, step into bathroom, standard interior and exterior door size

For information regarding stateroom bedding configurations and accessibility features on our ships please visit the [Accessibility](#) section of our website.

SHIP SPECIFICATIONS & FACILITIES

- 2,668 Guests
- 1,048 Crew
- 99,836 Gross Tons
- 984 Feet Long
- 13 Guest Decks
- Wraparound Promenade Deck
- 13 Restaurants & Cafes
- 7 Entertainment Venues
- 12 Lounges/Bars
- 2 Outdoor Swimming Pools (one with sliding glass roof)
- Spa & Salon
- Fitness Center
- Suite Lounge
- Duty-free Shops
- Internet Center
- Onboard Wi-Fi Access
- Casino
- Sport Court

ROTTERDAM

DECK PLANS & STATEROOMS

The deck plans are color-coded by category of stateroom, and the category letter precedes the stateroom number in each room. All staterooms are equipped with interactive LED television with On Demand movies, programming and multichannel music; mini-bar; mini-safe; data port; telephone.

Important Note: Not all staterooms within each category have the same furniture configuration and/or facilities. Appropriate symbols within the rooms on the deck plans describe differences from the stateroom descriptions below.

VERANDAH SUITES

PS
Pinnacle Suite: Bedroom with 1 king-size bed, oversize whirlpool bath & shower & additional shower stall, living room, dining room, dressing room, private verandah with whirlpool, pantry, 1 sofa bed for 2 persons, microwave, refrigerator, guest toilet, private stereo system, floor-to-ceiling windows.

SQ SA SB SC
Neptune Suites: 2 lower beds convertible to 1 king-size bed, bathroom with dual-sink vanity, full-size whirlpool bath & shower & additional shower stall, large sitting area, private verandah, floor-to-ceiling windows.

SS SY
Signature Suites: 2 lower beds convertible to 1 king-size bed, 1 Murphy bed for 1 person, bathroom with dual-sink vanity, shower, large sitting area, private verandah, floor-to-ceiling windows.

AS A B BC
Vista Suites: 2 lower beds convertible to 1 queen-size bed, shower, sitting area, private verandah, refrigerator, floor-to-ceiling windows.

VERANDAH STATEROOMS

VQ VS V VA VB VC VD VE VF VH
Verandah: 2 lower beds convertible to 1 queen-size bed, shower, sitting area, private verandah, floor-to-ceiling windows. All VH-category staterooms have partially obstructed views.

OCEAN-VIEW STATEROOMS

FA FB
Family: 2 lower beds convertible to 1 queen-size bed, 1 sofa bed for 2 persons & 1 upper bed. 2 bathrooms — one with bathtub, shower, sink & toilet; one with shower & sink.

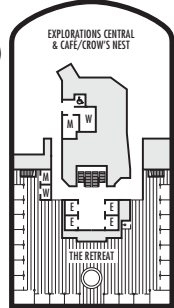
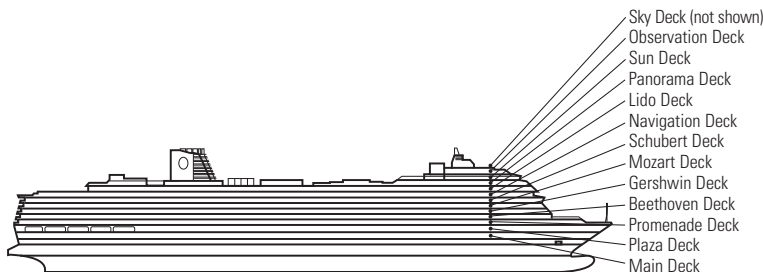
CQ C D E F
Large: 2 lower beds convertible to 1 queen-size bed, shower.

00
Single: 1 lower bed, shower.

INTERIOR STATEROOMS

IQ I J K L N
Large or Standard: 2 lower beds convertible to 1 queen-size bed, shower.

▼ Spa Suites and Staterooms. Opt for the serenity of a Spa Suite or Stateroom, featuring modern spa amenities.



This deck plan reflects information available as of 6/16/21; final details may change.



Holland America Line®
SAVOR THE JOURNEY

BOOK NOW FOR *ROTTERDAM'S* PREMIERE SEASON.
CALL YOUR TRAVEL ADVISOR OR 1-877-SAIL HAL,
OR VISIT HOLLANDAMERICA.COM

Consult <https://wwwnc.cdc.gov/travel/notices/covid-4/coronavirus-cruise-ship> for the latest CDC
cruise travel advice, warnings and recommendations. Ships' Registry: The Netherlands.